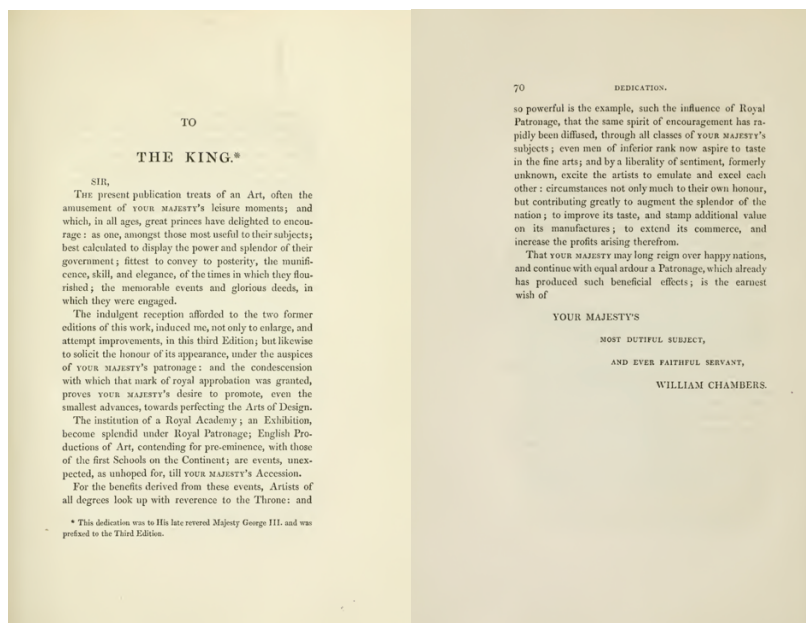
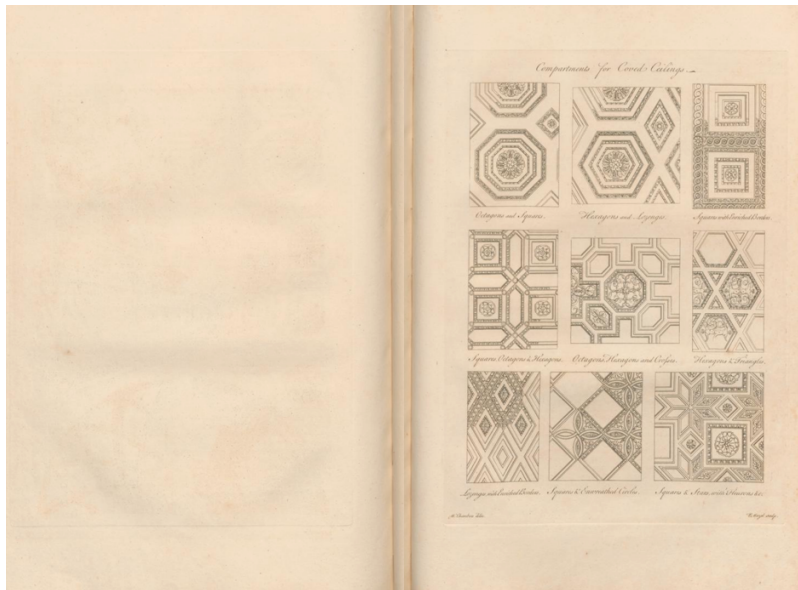


These pages speak of the same topic yet they are built differently. On the left page you find divided paragraphs. However, on the right page you find one single paragraph that goes from top to bottom with no space in between two lines.



These pages caught my attention mainly because of the way the author wrote his salutes to a person with high authority. The last four lines move from left to right, which perhaps emphasizes the submission of him as a ‘servant’ to the king.



The left page is completely empty which is opposite to the idea that he wants to present on the right page with the (probably) ornamental designs that would fill walls.